




Edison High School College Credit Plus Information Night

www.ohiohighered.org/ccp

Ohio

Department of Education
Department of Higher Education



College Credit Plus

EDISON
HIGH SCHOOL

January 2019

**WHAT IS COLLEGE
CREDIT PLUS (CCP)?**

CollegeCredit
PLUS

**OVERVIEW: CollegeCredit
PLUS**

Ohio's College Credit Plus helps students (grades 7-12) earn college and high school credits at the same time. The purpose of this program is to promote rigorous academic pursuits and to provide a wide variety of options to college-ready students. Edison High School has agreements with local colleges for specific courses, however, you can choose to take College Credit Plus courses from any college that offers a course that would benefit your future.

Kenyon College **EGSU** **Firelands** **FINDLAY**
THE UNIVERSITY OF FINDLAY

OVERVIEW: College Credit PLUS

REQUIRES TWO FUNDAMENTAL CONDITIONS:

- Student must be **enrolled** in both college and secondary school
- Student to earn on-**transcript** college and high school credit upon successful completion of course(s)

OVERVIEW: College Credit PLUS

- Students cannot be billed for any courses taken through a public college or university within Ohio.
 - Includes tuition, books and fees.
- Students can be billed if the school district is partnered with a private school or college except if they are considered economically disadvantaged.

OVERVIEW: College Credit PLUS

- Students can not take more than **30** college credits per academic year. High school classes are added into this allowance.

$$30 - (\text{high school credits} \times 3) =$$

Maximum CCP credit hours per year

- If a student exceeds the limit and the family decides to "self-pay", the entire course is self-pay at the college's standard rate of tuition, fees, and textbooks. Not just the overage.
- Once enrolled in a college class, the student can only take 120 total college credit hours; up until high school graduation.

IMPACT ON STATE TESTING: Ohio Department of Education

- CCP Courses in social studies will satisfy the End-of-Course graduation requirements. A grade conversion will be used to calculate points based on the following chart:
 - A or B = 5 points
 - C = 4 points
 - D = 3 points
 - F or drop course = 0
- There are no CCP/AP substitutions for Math, Biology or ELA exams. Students taking these subjects via CCP must take EOC exams.

IMPACT ON ATHLETIC ELIGIBILITY



- A student athlete must remain eligible in accordance with OHSAA bylaws
- To be athletically eligible, students must be passing five, one credit courses or the equivalent per grading period
- Most CCP courses taken during a semester equal one Carnegie unit, allowing students to earn more than the required five for athletic eligibility
 - See handout for more information
- Students will be required to submit midterm grades for eligibility

IMPACT ON ATHLETIC ELIGIBILITY



<p>IMPACT ON ATHLETIC ELIGIBILITY</p> <p>Student Name: _____</p> <p>Grade: _____</p> <p>Teacher: _____</p> <p>Course: _____</p> <p>Term: _____</p> <p>Midterm Grade: _____</p> <p>Final Grade: _____</p> <p>Comments: _____</p>	<p>IMPACT ON ATHLETIC ELIGIBILITY</p> <p>Student Name: _____</p> <p>Grade: _____</p> <p>Teacher: _____</p> <p>Course: _____</p> <p>Term: _____</p> <p>Midterm Grade: _____</p> <p>Final Grade: _____</p> <p>Comments: _____</p>	<p>COLLEGE CREDIT PLUS</p> <p>Student Name: _____</p> <p>Grade: _____</p> <p>Teacher: _____</p> <p>Course: _____</p> <p>Term: _____</p> <p>Midterm Grade: _____</p> <p>Final Grade: _____</p> <p>Comments: _____</p>
--	--	---

College Credit PLUS DELIVERY FORMATS

Note: The format of the course is not noted on the transcript.

OPTION #1: College Credit PLUS

COURSES OFFERED AT EHS

ENGLISH

GSW 1110- Introduction to Academic Writing (3)
GSW 1120- Academic Writing (3)
ENGL 103- Introduction to Literature & Language (4)
ENGL104- Introduction to Literature & Language (4)

MATH

MATH 1150- Introduction to Statistics (3)
MATH 1280- Pre-calculus Mathematics (5)
MATH 1340- Calculus and Analytic Geometry IA (3)
MATH 1350- Calculus and Analytic Geometry IB (3)

SOCIAL STUDIES

HIST 101- United States History, 1100-1865 (4)
HIST 102- United States History, 1865-Present (4)
PSCI 101- The Quest for Justice I (4)
PSCI 102- The Quest for Justice II (4)
POLS1100- American Government (3)

SCIENCE

BIOL 102- Introduction to the Biological Sciences (3)
BIOL 201- Introduction to Anatomy & Physiology (3)
BIOL 201L- Intro. to Anatomy & Physiology Lab (1)
BIO 1080- Life in the Sea (3)

FOREIGN LANGUAGE

FREN 2010- Intermediate French I (3)
FREN 2020- Intermediate French II (3)
FREN 321- Advanced Composition & Conversation (4)
SPAN 2010- Intermediate Spanish I (3)
SPAN 2020- Intermediate Spanish II (3)

The same CCP opportunities
without the need for travel to
another campus!

Edison High School offers **73**
CCP credits in our building.

We are a leader in the State of Ohio!

[illegible]

*Students may not be allowed to participate in the event. The school has a policy that no student should be allowed to participate in the event if they are under 18 years of age. The school has a policy that no student should be allowed to participate in the event if they are under 18 years of age. The school has a policy that no student should be allowed to participate in the event if they are under 18 years of age.

EHOVE Career Center CCP Options:

- Involve prescribed college courses based on program of study
- Allows students to take advanced courses in their interest area to supplement lab learning
- Credits are "embedded" in lab program

CLASSES AT THE COLLEGE/ONLINE

- Students can go to the college campus directly and take classes
- May also take on-line courses
 - Make sure to weigh the pros/cons of this option!

College Credit PLUS BENEFITS & CAUTIONS



All of the information required to make an informed decision

BENEFITS: College Credit PLUS

- Expands high school curriculum
- Academically challenging courses
- Pursue special interests 'in-depth'
- Credits count for both college and high school
- Opportunities for career exploration
- Assigned a college academic advisor

BENEFITS: College Credit PLUS

- May reduce time to complete college degree
- Provides financial support for college courses – May reduce overall costs of college education
- Access to college campus resources
 - Computer labs, fitness centers, career services, tutoring, library, etc.
- Diverse learning environment

CAUTIONS: CollegeCredit
PLUS

- Increased academic rigor and responsibility for learning.
- Impact on high school GPA and class standing
- Permanent College GPA
 - Permanent college transcripts must be provided to any college to which the student may apply
- No grade updates and reduced parental involvement – CCP students are viewed as adults.

CAUTIONS: CollegeCredit
PLUS

- Must provide their own transportation
- Increased travel and study time
- Academic progress is the responsibility of the student – College will not talk to parents without releases
- Adult learning environment
- Class schedule limitations
- Students who attend classes on college campus have reduced opportunities for participation in high school activities

CollegeCredit
PLUS
**FREQUENTLY ASKED
QUESTIONS**

FAQ'S: College Credit PLUS

- **Is the college credit I earned in high school through CCP guaranteed to transfer to another postsecondary institution?**
 - <https://www.transferology.com/>
- **Can I take courses during the summer?**
 - The summer term will apply as the first term of the next school year.
- **Which CCP courses will substitute for EOC exams?**
 - CCP courses in the following subjects will substitute for EOC exams: American History, American Government and Biology. Graduation points will be determined based on the letter grade earned in the CCP class. (Students must complete End of Course exams for English, math, and science)

FAQ'S: College Credit PLUS

- **TESTING REQUIREMENTS**
 - Students' scores must indicate that they are ready for "college-level" courses in at least one subject area
 - Colleges and universities will review students' scores using statewide standards (handout enclosed)
 - If a student's scores are not "college-level," other conditions may be considered depending on the exam scores and if the student has:
 - Overall GPA (3.0) or
 - Recommendation form/letter

FAQ'S: College Credit PLUS

WHAT COURSES CAN A STUDENT TAKE?

- College advisors will help students know which courses they can take, based on:
 - Assessment scores
 - Course prerequisites
 - Level I or Level II – depending on the number of credit hours a student has already completed (handout)
- Once a student completes the First 15 credit hours in Level I, he or she can move to Level II courses, which are any other allowable college courses for which a student meets the prerequisites.

FAQ'S: College Credit PLUS

WHAT COURSES CAN A STUDENT TAKE?

- Non-allowable courses include:
 - A private course with one-on-one instruction
 - Courses with high fees
 - Study abroad courses
 - Physical education courses
 - Pass/Fail graded courses
 - Remedial courses
 - Religious courses.

FAQ'S: College Credit PLUS

What if I fail a class?

- Classes failed or withdrawn with an "F" will receive an "F" on the high school and college transcript and will be calculated into the high school and college GPA.
- Students will be responsible to reimburse the district for the amount paid for the failed course and textbooks.
- The district will hold grades and credits received for high school courses until payment has been made.
- See detailed letter in packet for more information.

FAQ'S: College Credit PLUS

WHAT ARE THE CONSEQUENCES OF UNDERPERFORMING?

- If students perform poorly, they may be placed CCP probation, CCP dismissal or on academic probation or dismissal by the college.
- A student will be placed on CCP probation if he or she earns less than a cumulative 2.0 GPA in CCP courses or withdraws from 2 or more courses in an academic term.
- If ultimately dismissed from CCP, students may not enroll in any College Credit Plus courses.
- Reference CCP Probation/Dismissal handout in materials

College Credit
PLUS

NEXT STEPS

NEXT STEPS: College Credit
PLUS

- Submit your Intent to Participate form to EHS Guidance Office by **April 1st**
- Discuss college course selections with Mrs. Brown
- Complete CCP application(s)
- Meet Remediation Free Testing Standards and college/university admission criteria
- Register for classes

College Credit
PLUS

BGSU Firelands

EHS Offers the following courses in partnership with BGSU Firelands:

- CCP Marine Biology (BIO1080 = 3 credits)
- CCP Junior Language Arts (GSW1110 + GSW1120 = 6 credits)
- CCP Government/Economics (POLS1100 = 3 credits)
- CCP Statistics (Math 1150 = 3 credits)
- CCP Pre-Calculus (Math 1280 = 5 credits)
- CCP Calculus (MATH 1340 + MATH 1350 = 6 credits)
- CCP French III (FREN 2010 + French 2020 = 6 credits)
- CCP Spanish III (SPAN 2010 = 3 credits)
- CCP Spanish IV (SPAN 2020 = 3 credits)

BGSU Firelands Admission Steps:

Step 1: Turn in INTENT TO PARTICIPATE FORM to EHS by April 1st

Step 2: APPLY

- NEW students interested in participating must apply online at <https://chc.bgsu.edu/admission/apply.aspx>. There is no cost to apply. Make sure you apply for the correct semester (FA19 or SP20). Current students do not need to reapply.

Step 3: PLACEMENT TESTING

- See the CCP Placement Testing Information Student Checklist
- You must apply at least 24hrs prior to Accuplacer testing
- Accuplacer testing will be held at BGSU Firelands
- You may use ACT scores if you took the ACT exam within the past year
- Applicants must score college-ready on the placement testing to participate.

Step 4: TRANSCRIPTS

- Ask Mrs. Brown to send transcripts to BGSU Firelands

Step 5: ACCEPTANCE LETTER

- Once you complete the steps above, you will receive an acceptance letter with instructions on how to set up the MyBGSU account and details related to the orientation process (if taking classes at BGSU).

Step 6: If you are taking classes offered at EHS, you will be registered by Mrs. Brown. If you plan to take courses on the BGSU Firelands campus, schedule a meeting with a BGSU advisor.

TESTING DETAILS:

ACCUPLACER TESTING AT BGSU

Students must fill out BGSU CCP application at least 48 hours prior to testing. Reference handout for practice materials and required scores.

Call 419.372.0886 to schedule testing.

Colleges Credit
PLUS

FINDLAY
THE UNIVERSITY OF FINDLAY

Colleges Credit
PLUS

Kenyon College

Colleges have the
final decision on
student admission.

SUMMARY: College Credit PLUS

To be eligible for CCP courses, students must:

- Meet all college admission standards and application deadlines
- Meet requirements and standards set for college courses (placement and prerequisites)
- Achieve "remediation-free" test scores

Visit the following website for additional information:

www.ohiohighered.org/ccp

CONTACTS

Mr. Jeff Goodwin
Principal
Edison High School
419-499-4652 x1005
JGoodwin@edisonchargers.org

Mrs. Elsa Brown
School Counselor
Edison High School
419-499-4652 x1003
EBrown@edisonchargers.org

PLEASE CONTACT US WITH ANY QUESTIONS!

THANK YOU!

EDISON HIGH SCHOOL - College Credit Plus Pathways

9th Grade	10th Grade	11th Grade	12th Grade
<ul style="list-style-type: none"> • Freshman Language Arts • Honors Freshman Language Arts • Algebra I-A • Algebra I • Honors Geometry • Physical Science • Honors Biology 	<ul style="list-style-type: none"> • Sophomore Language Arts • Honors Sophomore Language Arts • Algebra I-B • Algebra II • Honors Algebra II • Biology • Honors Chemistry 	<ul style="list-style-type: none"> • Junior Language Arts • CCP Junior Language Arts (BGSU: GSW1110+GSW1120 = 6) • Integrated Math III • Geometry • Pre-Calculus • CCP Statistics (BGSU: MATH 1150 = 3) • CCP Pre-Calculus (BGSU: MATH 1280 = 5) • Environmental Science • Chemistry • Physics • CCP Advanced Biology (FINDLAY: BIOL 102 = 3) • Government • CCP US Government and Politics (BGSU: POLS 1100 = 3) • French III • CCP French III (BGSU: FREN 2010+FREN 2020 = 6) • Spanish III • CCP Spanish III (BGSU: SPAN 2010 = 3) 	<ul style="list-style-type: none"> • Senior Language Arts • CCP Senior Language Arts (KENYON: ENG-103+ENG 104 = 8) • Probability & Statistics • CCP Statistics (BGSU: MATH 1150 = 3) • CCP Calculus (BGSU: MATH1340+MATH 1350 = 6) • Forensic Science – Animal Science – Astronomy • Anatomy & Physiology • CCP Advanced Anatomy & Physiology (BIOL 201+BIOL 201L = 4) • CCP Marine Biology (BGSU: BIO 1080 = 3) • CCP Advanced Biology (FINDLAY: BIOL 102 = 3) • AP Chemistry (College credit assigned based on results of summative assessment) • Economics • CCP Political Science (KENYON: PSCI 101+ PSCI 102= 8) • CCP Advanced American History (KENYON: HIST 101+HIST 102 = 8) • CCP French IV (KENYON: FREN 321 = 4) • CCP Spanish IV (BGSU: SPAN 2020 = 3)
<ul style="list-style-type: none"> • Freshman World History • French I • Spanish I 	<ul style="list-style-type: none"> • Recent American History • Honors Recent American History • French II • Spanish II 		

Total Combined CCP College Credits Available at Edison High School = 73

• Courses may not be offered if enrollment is limited. The combined credit total does NOT include AP courses. Courses listed depict the most common sequences. Per CCP regulations, students may earn a maximum of 30 credit hours per year including all other courses taken at the high school. Students must meet admission criteria for each CCP institution.

LEVEL-1: 15-30 HOUR PATHWAY

ON-CAMPUS/ONLINE RECOMMENDED COLLEGE COURSES FOR CCP STUDENTS

Ohio Graduation Requirements

OHIO REQUIRES STUDENTS TO TAKE AND COMPLETE A MINIMUM OF 20 REQUIRED CREDITS.

STATE MINIMUM

OTHER REQUIREMENTS

English language arts	4 units
Health	½ unit
Mathematics	4 units
Physical education	½ unit
Science	3 units
Social studies	3 units
Electives	5 units

Additional credits, if any, in district requirements

KEY

* Courses which fulfill the BGSU (BGP) International Perspective requirement

** Courses which fulfill the BGSU (BGP) Cultural Diversity in the United States requirement

*** Placement may be needed

ENGLISH LANGUAGE ARTS

GSW 1110 Introduction to Academic Writing***
 GSW 1120 Academic Writing***
 ENG 1500 Response to Literature
 ENG 2010 Introduction to Literature
 ENG 2110 African American Literature**
 ENG 2120 Native American Literature**
 ENG 2610 World Lit from Ancient Times to 1700*
 ENG 2620 World Literature from 1700 to Present*
 ENG 2640 British Literature to 1660
 ENG 2650 British Literature 1660-1945
 ENG 2740 American Literature Survey to 1865
 ENG 2750 American Literature 1865-1945

HEALTH

HP 2150 Health and Wellness

MATHEMATICS

MATH 1150 Introduction to Statistics***
 MATH 1220 College Algebra II***
 BA 1600: Business Analytics
 MATH 1280 Precalculus Mathematics (5)***
 MATH 1310 Calculus and Analytic Geometry (5)***

SCIENCE

ASTR 2010 Modern Astronomy
 ASTR 2120 The Solar System
 BIOL 1010 Environment of Life
 BIOL 1040 Introduction to Biology (4)
 BIOL 1080 Life in the Sea
 BIOL 2040 Concepts in Biology I (4)
 BIOL 2050 Concepts in Biology II (4)
 CHEM 1000 Introduction to Chemistry
 CHEM 1250 General Chemistry I (5)***
 FN 2070 Introduction to Human Nutrition
 GEOG 1250 Weather and Climate
 GEOL 1000 Introduction to Geology
 GEOL 1040 Earth Environments (4)

GEOL 1050 Life Through Time (4)

GEOL 2150 Geologic History of Dinosaurs

PHYS 1010 Basic Physics

PHYS 2010 College Physics I (5)***

PHYS 2020 College Physics II (5)***

SOCIAL STUDIES

ENVS 1010 Introduction to Environmental Studies
 ETHN 1010 Introduction to Ethnic Studies**
 GEOG 1210 World Geography: Eurasia & Africa*
 GEOG 1220 World Geography: Americas/Pacific*
 HIST 1510 World Civilizations*
 HIST 1520 Modern World*
 HIST 2050 Early America**
 HIST 2060 Modern America
 INST 2000 Introduction to International Studies*
 POLS 1100 American Government
 POLS 1710 Introduction to Comparative Government*
 PSYC 1010 General Psychology (4)
 SOC 1010 Principles of Sociology

ELECTIVE RECOMMENDATIONS

ACS 2000 Introduction to American Culture Studies
 ACS 2500 Cultural Pluralism in the United States**
 COMM 1020 Introduction to Public Speaking
 PHIL 1010 Introduction to Philosophy
 PHIL 1020 Introduction to Ethics
 POPC 1600 Introduction to Popular Culture
 POPC 1650 Popular Culture and Media
 WS 2000 Introduction to Women's Studies**

ECONOMICS AND FINANCIAL LITERACY

ECON 2000 Introduction to Economics
 ECON 2020 Principles of Microeconomics
 ECON 2030 Principles of Macroeconomics
 FIN 2000 Personal Finance

FINE ARTS

ART 1010 Introduction to Art
 ARTH 1450 Western Art I*
 AS 1100 Arts BG
 MUCT 1010 Exploring Music
 MUCT 1250 Exploring Music of World Cultures*
 THFM 1410 The Theatre Experience
 THFM 1610 Introduction to Film

COMPUTER PROGRAMMING/LITERACY

CS 1000 Computer Basics
 CS 1010 Introduction to Programming
 CS 2010 Programming Fundamentals***
 CS 2020 Object-oriented Programming

FOREIGN LANGUAGE

Options include: Chinese, French, German, Italian, Latin, Japanese, Russian, Sign Language (limited availability), & Spanish

Course sequence based on level of experience and/or recommendation. See advisor for recommendation.

For a complete listing of all course and elective options that are considered BG Perspective Courses, please go to the following link,
bgsu.edu/bg-perspective

Guidelines for Student Athletic Eligibility

Produced By The Ohio High School Athletic Association

For School Counselors - 2018-19

Revised 5/3



Virtually every scholarship appeal that comes to the OHSAA office places sole responsibility on you, the school counselor, for a student's failure to meet the requirements of the applicable scholarship bylaws found in 4-4. Even though that notion is absolutely incorrect and OHSAA rules make reference to the fact that scholastic success is a shared responsibility with parents and students expected to shoulder most of the load, the Executive Director's Office has prepared this document to inform you of the crucial information that you need to know in order to advise students appropriately.

IMPORTANT ITEMS TO KNOW

HIGH SCHOOL

1. All high school students MUST be enrolled in and earn passing grades in a minimum of five one-credit courses (or the equivalent) each and every grading period to have continuing eligibility.
2. Participate in every effort to ensure that all students are fully scheduled in a minimum of five one-credit courses each grading period.
3. If a student comes to you and asks to drop a course, ask the following questions:
 - a. Are you a student athlete?
 - b. What sports do you play?
 - c. Have you visited with your athletic administrator or principal to determine if dropping this course will affect your eligibility to play a sport?
4. Do not allow the student to drop a course which reduces his/her course load below five one credit courses unless you receive a form from a senior administrator a template of which can be accessed here. (<http://www.ohsaa.org/Portals/0/Eligibility/forms/SuggestedScheduleChangeForm.pdf>)
5. The required Physical Education Course is not a full credit course. Do not count this course as one of the five full credit courses.
6. Always contact your principal or athletic administrator if you have any questions.
7. The OHSAA has no minimum grade point (GPA) requirement, thus issues regarding eligibility when only the GPA is of concern are strictly a local school district matter and not an OHSAA matter

Grades 7-8

1. All 7-8th grade students MUST be enrolled in and earn passing grades in a minimum of five courses each and every grading period to have continuing eligibility.
2. Participate in every effort to ensure that all students are fully scheduled in a minimum of five courses each grading period.
3. If a student comes to you and asks to drop a course, ask the following questions:
 - a. Are you a student athlete?
 - b. What sports do you play?
 - c. Have you visited with your athletic administrator or principal to determine if dropping this course will affect your eligibility to play a sport?
4. Do not allow the student to drop a course which reduces his/her course load below five courses unless you receive a form from a senior administrator a template of which can be accessed here. (<http://www.ohsaa.org/Portals/0/Eligibility/forms/SuggestedScheduleChangeForm.pdf>)
5. Always contact your principal or athletic administrator if you have any questions.

NOTE: "Grading period" is defined as your school's board-adopted calendar. In most school districts, this is a nine-week period, while some districts use six- or 12-week periods or semesters. It should also be noted, however, that interim, biweekly or weekly evaluations are not considered "grading periods," and restoration of eligibility is NOT permitted after such evaluations.

In addition, students who have not met the high school or 7-8th scholarship requirement are not "substantively eligible;" and a student who fails to register for enough credit hours, fails a class(es) or drops a class that lowers the student below the requisite number of credits, always has a shared responsibility for this shortcoming thus disqualifying such shortcoming from the "due solely to an administrative error" category. Therefore, the administrative error bylaw shall never be used in conjunction with Bylaws 4-4-1 or 4-4-5.

Examples of Determining Student Eligibility - Grades 9-12

Passing grades must be received in a minimum of five one-credit courses, or the equivalent, in the immediately preceding grading period. To determine credit equivalency, multiply full-year courses by a factor of 1; semester courses by a factor of 2; twelve-week courses by a factor of 3; and nine-week courses by a factor of 4.

Example 1: 1st Nine-Week Grading Period

Subject	Grade	Credit & Duration	Factor	Credit Equivalency (Must Equal 5 Units or Equivalent)
English 10	C	1 - all year	1	$1 \times 1 = 1$
Spanish I	D	1 - all year	1	$1 \times 1 = 1$
Health	B	1/2 - semester	2	$1/2 \times 2 = 1$
Algebra	F	1 - all year	1	0
Computers	C	1/2 - semester	2	$1/2 \times 2 = 1$
Social Studies	C	1/2 - semester	2	$1/2 \times 2 = 1$
Total Credits				5 = eligible for 2nd grading period

Example 2: 4th Nine-Week Grading Period

Subject	Grade	Credit & Duration	Factor	Credit Equivalency (Must Equal 5 Units or Equivalent)
English	C	1 - all year	1	$1 \times 1 = 1$
O.W.E.	F	2 - all year	1	0
O.W.E.	D	1 - all year	1	$1 \times 1 = 1$
History	B	1 - all year	1	$1 \times 1 = 1$
Health	B	1/4 - semester	2	$1/4 \times 2 = 1/2$
Typing	C	1/4 - 4th 9 weeks	4	$1/4 \times 4 = 1$
Total Credits				4 1/2 = ineligible for 1st grading period of next school year

Post-Secondary Option - College Credit Plus

Note: If a student is taking all course work at the post-secondary institution under the College Credit Plus program, the calculation of equivalency has changed. Please note that in order for a CCP class to be used for determining eligibility for Bylaw 4-4-1, the class must count toward HS graduation.

In addition, students electing to enroll in CCP must be certain that 1.) The faculty members at the post-secondary institution understand that they will need to provide grades or a progress report at the time when the high school's grading period is over, and 2.) The student-athlete is taking enough course work at the post-secondary institution exclusively or between the post-secondary institution and the high school combined to be equivalent to five one-credit courses. Calculating equivalency of credits in the post-secondary institution is conducted in the same manner as in the high school, based on the Carnegie unit. College courses for which three or more semester hours of credit are earned shall be awarded one Carnegie unit. Fractional Carnegie units will be awarded proportionately. This means that courses which are four, five, six or even seven hours of credit receive just one Carnegie unit. Examples of CCP options:

-1-

Example 1: 1st Nine-Week Grading Period

Subject	School	Credit & Duration	Credit Equivalency (Must Equal 5 Units or Equivalent)
History	High	1 (year course)	$1 \times 1 = 1$
Literature	CCP	3 semester hours	$1 \times 2 = 2$
Calculus	CCP	5 semester hours	$1 \times 2 = 2$
Biology	CCP	3 semester hours	$1 \times 2 = 2$
Total Credits			7 = eligible for 2nd grading period provided all courses passed

The factor of 2 is used for post-secondary institutions that are on the semester system.

Example 2: 4th Nine-Week Grading Period

Subject	School	Credit & Duration	Credit Equivalency (Must Equal 5 Units or Equivalent)
French	CCP	5 semester hours	$1 \times 2 = 2$
Sociology	CCP	3 semester hours	$1 \times 2 = 2$
Computers	CCP	2 semester hours	$.67 \times 2 =$
Geology	CCP	3 semester hours	$1 \times 2 = 2$
Total Credits			7.34 = eligible for 1st grading period of next school year provided all courses passed

The factor of 2 is used for post-secondary institutions that are on the semester system. Note that this student is taking all courses at the post-secondary institution, which is acceptable.

Block Scheduling

Block scheduling or double blocking of courses does not change the calculation of credit equivalencies as required in OHSAA bylaws. Courses taken over one semester or one quarter (9-week period) carry a factor of 2 and 4, respectively. Therefore, if a student takes an English course during the first semester only and receives one credit for passing that course, that class carries an equivalency of 2 (1 credit \times the factor for a semester course (2) = 2). Examples of block scheduling:

Example 1: 1st Nine-Week Grading Period

Subject	Grade	Credit & Duration	Factor	Credit Equivalency (Must Equal 5 Units or Equivalent)
English 10	C	1 - semester	2	$1 \times 2 = 2$
Spanish 2	C	1 - semester	2	$1 \times 2 = 2$
Health	B	1/4 - 1st 9 weeks	4	$1/4 \times 4 = 1$
Total Credits				5 = eligible for 2nd grading period

Example 2: 3rd Nine-Week Grading Period

Subject	Grade	Credit & Duration	Factor	Credit Equivalency (Must Equal 5 Units or Equivalent)
Calculus	B	1 - semester	2	$1 \times 2 = 2$
French	C	1 - semester	2	$1 \times 2 = 2$
Phys. Ed	A	1/4 - semester	2	$1/4 \times 2 = 1/2$
Total Credits				4 1/2 = ineligible for 4th grading period

Examples of Determining Student Eligibility - Grades 7-8

Passing grades are required in a minimum of five subjects in which enrolled in the immediately preceding grading period. All courses, regardless of how many times per week the course meets, in which a student receives a grade count toward this eligibility requirement.

Example 1: 1st Nine-Week Grading Period

Subject	Grade
English	F
Math	B
Home Economics	B
Computers	C
Music	C
Health	E
Credits Passed	4 of 6 classes = NOT eligible for 2nd grading period

Example 2: 3rd Nine-Week Grading Period

Subject	Grade
English	F
Math	D
Industrial Arts	C
Music	B
Computers	B
Physical Education	B
Credits Passed	5 of 6 classes = eligible for 4th grading period

NOTE:

For additional information, contact:

Ohio High School Athletic Association
4080 Roselea Place, Columbus, Ohio 43214
Office Hours: Monday - Friday 7:30 a.m. - 4:30 p.m.
Telephone: (614) 267-2502 • Fax: (614) 267-1677 • Website: ohsaa.org

The complete text of the Bylaws and Regulations is published in the OHSAA Handbook, which is mailed to your school each summer and is posted on the OHSAA website.

COLLEGE CREDIT PLUS

EDISON HIGH SCHOOL

College Credit Plus Grade Check Form
To be completed every nine weeks for eligibility purposes.

Student Name: _____

Address: _____

City: _____ Zip: _____

Home Phone: _____ Cell phone: _____

Dear Professor,

The following information is required of the above named student to remain eligible for athletic and extracurricular purposes. According to the Ohio High School Athletic Association, the home school must receive a progress report from each faculty member at the institution where the student-athlete is taking the course at the end of each high school grading period. Therefore, we kindly request the information be completed on their behalf. We appreciate the time and effort required to complete this form and the work you do with Edison students.

**** All forms are due back to the EHS Athletic Office by March 29. ****

Course Name	Current Grade	Days Missed	Professor's Signature

Please return this form to the student.
If you would prefer, you may mail or e-mail your concerns to:

TOM JEFFREY
ATHLETIC DIRECTOR
EDISON HIGH SCHOOL
2603 SR 113 E
MILAN, OHIO 44846

Professors may also e-mail grades and attendance to:
TJeffrey@edisonchargers.org

Student Scenario	Grade Earned	Is Being an Economically Disadvantaged Student a Factor?	High School Graduation Impact	Eligible to Retake Course under CCP	Option to Retake the College Course	Payment Responsibility Course	Course Payment Responsibility If Course is Repeated
Student withdraws before the 15th day after the college course begins	None	No	Student has not satisfied the intended high school graduation requirement.	Yes	Under College Credit Plus	No payment	School District
Student receives a failing grade in the course	"F" or "E" grade	Yes	A failing grade is applied to students' high school transcript. If the course is retaken, in accordance with the college's policy, then the new grade may be applied to students' high school transcript in satisfaction of graduation requirement in that subject area.	Yes	If the college's policy allows students to retake a previously failed course.	District may seek family reimbursement for tuition amount paid to the college for that student's enrollment in that course only, if the student is not economically disadvantaged pursuant to O.A.C. 3333-1-65.6	School District

A College Credit Plus program participant is not eligible to receive a "no grade" course outcome, except for a "W" indicating the student withdrew from the course.

*The district's reimbursement option for when a student drops or withdraws after the roster date, 14th day after the college course began is effective in accordance with the guidance located here: https://www.ohiohighered.org/sites/ohiohighered.org/files/uploads/CCP/CCP_revised-interpretation_tuition-reimbursement_012516.pdf

College Credit Plus: Student Eligibility Assessment Testing

Effective Academic Year 2018-2019, a student interested in College Credit Plus must be considered eligible to participate.

- A student is considered **Eligible** for the program if the student scores at or above the "Assessment Threshold Score" in at least one subtest of an approved assessment exam* in the table below.
- If a student does not score at the Assessment Threshold Score in at least one subtest, but has scored within the "Score Range to be Considered" (calculated as the standard error of measurement), then the student can be considered **Conditionally Eligible** for the program if he/she also meets one of these criteria:
 - ✓ Has a 3.0 cumulative GPA or
 - ✓ Receives a recommendation from school counselor, principal, or career-technical advisor

Exam	Subtest	Assessment Threshold Score (Eligible)	Score Range to be Considered (Conditionally Eligible)
Classic ACCUPLACER	Sentence Skills	88	78 - 87
	WritePlacer	5	4
	Reading Comprehension	80	71 - 79
	College Level Math (CLM)	55	46 - 54
Next-Generation ACCUPLACER	Writing	263	257 - 262
	WritePlacer	5	4
	Reading	263	256 - 262
	Quantitative Reasoning, Algebra, & Statistics (QAS)	263	259 - 262
	Advanced Algebra & Functions (AAF)	263	257 - 262
ACT	English	18	16 - 17
	Reading	22	20 - 21
	Math	22	20 - 21
SAT	Evidence Based Reading & Writing	480	450 - 479
	Mathematics	530	500 - 529
ALEKS	Mathematics	46	40 - 45
MapleSoft T.A.	Mathematics	50% of algebra items answered correct (16 out of 32)	12 - 15 correct
PlaceU (WebAssign)	Mathematics	18	16 - 17

* Approved assessment exams are listed in this table and in the "Uniform Statewide Standards for Remediation-Free" document. This document is reviewed annually; check for current version on www.ohiohighered.org/ccp.

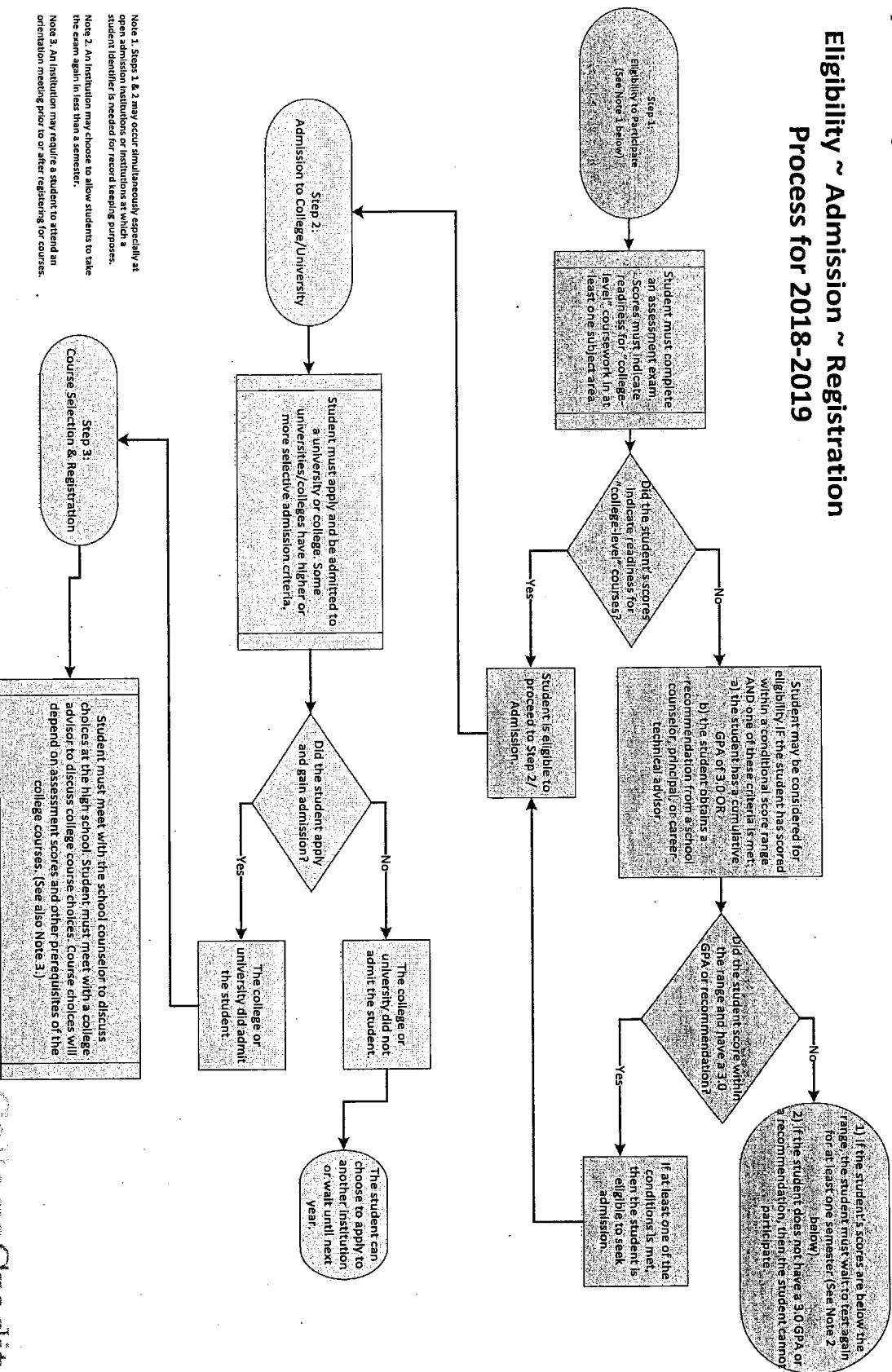
Updated October 2017

College Credit
PLUS

College Credit Plus: Student Eligibility Process

Effective Academic Year 2018-2019, a student interested in College Credit Plus must complete the steps in the chart below to determine eligibility, admission, and course placement/registration.

Eligibility ~ Admission ~ Registration Process for 2018-2019



October 2017

CollegeCredit
Plus

www.ohiohighered.org/ccp

Student and Parent Information
College Credit Plus
CCP Probation and CCP Dismissal

Student's Name: _____

Parent's (or Parents') Name(s): _____

Notification Meeting Date: _____

Name of Secondary School Representative: _____

Instructions: Choose either the CCP Probation or CCP Dismissal section for this student.

CCP Probation (check if this status applies to this student):

- ☐ Students in the College Credit Plus program who are deemed "underperforming" and are placed on CCP Probation are due to the following conditions (check one or both, as applicable):
- ☐ Has a cumulative GPA of lower than a 2.0 in the college courses taken through the CCP program.
 - ☐ Withdraws from, or receives no credit for, two or more courses in the same term. (Withdrawing from a course occurs when the student dis-enrolls from a course after the census date and the secondary school is financially responsible for the tuition associated with the course.)

Action:

- A student on CCP Probation may enroll in no more than one college course and the student will not enroll in a college course in the same subject in which the student earned a grade of D or F or for which the student received no credit.
- If the student had already registered for more than one course prior to being placed on CCP Probation, the **student must request each college or university to dis-enroll the student from courses as necessary.**
- The student, as noted above, may continue to be enrolled in one course. **The student must notify that college in which course the student would like to remain enrolled.**
- If the student fails to dis-enroll, the secondary school will promptly notify the student and the student's parent that the student will be responsible for paying all tuition, fees, and textbooks costs. That student is also then considered an ineligible student and is dismissed from the CCP program in the next term.
- If the student on CCP Probation takes one course and the grade raises the student's cumulative GPA to a 2.0 or higher, the student is removed from CCP Probation and may participate in the program without restrictions.
- If the grade does not raise the cumulative GPA to a 2.0 or higher, the secondary school is responsible for dismissing the student from the program.

CCP Dismissal (check if this status applies to this student):

- ☐ Students in the College Credit Plus program who are deemed "ineligible" and are placed on CCP Dismissal when the student meets the definition of an underperforming student for two consecutive terms of enrollment.

Action:

- Any student on CCP Dismissal may not take any college courses through the program.
- If the student had already registered for college courses prior to being dismissed, **the student will request each college to dis-enroll the student from the courses.**
- If the student fails to dis-enroll, the secondary school will promptly notify the student and the student's parent that the student will be responsible for paying all tuition, fees, and textbooks costs. The student will continue to be on CCP Dismissal for an additional term.

Instructions: Review the Appeals Process and School Policy with the Student/Parent:

Appeals Process

- A student may appeal to the district superintendent or school governing entity the CCP Dismissal or prohibition from taking a course in the same subject in which the student earned a grade of "D" or "F" or for which the student received not credit.

The governing entity or superintendent will consider any extenuating circumstances separate from academic performance that may have affected the student's CCP status and may do any of the following:

- Allow the student to participate in the program without restrictions.
- Allow the student to take a course in the same subject in which the student earned a grade of "D" or "F" or for which the student received no credit.
- Allow the student to participate in the program on CCP Probation.
- Maintain the student's status on CCP Dismissal from the program.

The secondary school's policy (developed prior to the start of summer term 2018) must be attached to this document.

- The student must request an appeal within five business days after being notified of the CCP Dismissal or the CCP Probation that prohibits the student from taking a course in the same subject.
- The secondary school will promptly notify any college or university in which the student is enrolled that the student has requested an appeal.
- The district superintendent or school governing entity will issue a decision on the student's appeal within ten business days after the date the appeal is made.

Complete these dates to inform the student of dates that must be met if an appeal is requested:

- ☐ Notification Meeting Date (same as date on page 1): _____
- ☐ Student Request for Appeal by this date (five business days after the notification date): _____
- ☐ Secondary School Decision by this date (ten business days after the student requests the appeal): _____

- The decision of the superintendent or governing entity is final.
- The secondary school will promptly notify any college or university in which the student is enrolled of the decision.
 - If the decision is to continue the CCP Dismissal, the college or university will permit the student to withdraw from all courses without penalty and the secondary school will not be required to pay for those courses.
 - If the superintendent or governing entity fails to issue a decision within ten business days, the college or university will permit the student to withdraw from all courses for which the student is not eligible without penalty. If the decision on the appeal is made after the college/university's no-fault withdrawal date, the secondary school will pay for those courses.

Signatures of the student and parent acknowledge receipt and explanation of the CCP Probation or CCP Dismissal status:

Student Signature: _____

Parent Signature: _____

School Representative Signature: _____

Placement Testing

BGSU Firelands [<https://www.firelands.bgsu.edu>] / Administrative Offices [</offices.html>] / Technology Support [</offices/technology-support.html>] / Placement Testing

Test Information

What to Expect

WHAT IS PLACEMENT TESTING?

BGSU Firelands uses a product by College Board, called Accuplacer. It tests reading comprehension, mathematics, and writing skills, and is designed to help accurately place you in college courses. These tests will help identify your strengths and needs in each subject area. The test results will then be used by your advising team along with your academic background and goals to help you select what courses you should take while at BGSU. The most important thing to remember: **YOU CANNOT PASS OR FAIL A PLACEMENT TEST!**

WHO HAS TO TAKE PLACEMENT TESTS?

All new, college credit plus (CCP), and some transfer students will be required to take placement tests in one or more of the following areas: Math, Reading, and Writing (English). The office of Student Services or College Access will determine what tests transfer and CCP students will be required to take. Anyone without an ACT score will be required to take some or all placement tests.

HOW LONG WILL THE TESTS TAKE AND HOW MANY QUESTIONS?

Accuplacer is a comprehensive computer-adaptive placement test. The reading comprehension and math sections are multiple choice and are untimed. This means you work at a pace that is comfortable to you. The reading and math tests can have as few as 12 multiple choice questions or as many as 40 multiple choice questions depending how quickly the test gauges your skills.

The Writeplacer test, which is the writing/english test within Accuplacer, is a 40 minute timed writing sample that starts a clock when you start typing. Don't worry, you will be given a topic in which to write about.

The average test takes around 2 hours and 30 minutes. The average times are listed here so plan accordingly to avoid feeling rushed:

- Demographics (info about yourself) 10 - 15 minutes
- Reading will take 25 - 30 minutes

- Math 45 - 60 minutes
- Writeplacer [English/Writing] 40 minutes

* Keep in mind though most components are NOT timed so some students may take longer or finish more quickly than others! DO NOT rush yourself!

WHAT SHOULD I BRING TO THE TEST CENTER?

All students should bring a pencil and state or school issued photo id or passport (no other forms of ID can be accepted). No calculator will be required Accuplacer will have one on the screen for the questions where a calculator can be used.

QUESTIONS ABOUT PLACEMENT TESTING?

Undergraduate Students: Contact Academic & Student Services in 129 George Mylander Hall or call 419.372.0886

College Credit Plus Students: Contact College Access in 131 George Mylander Hall or call 419.372.0766

How should I prepare for the tests?

What should I expect during the tests?

What should I expect after the test?

Important Notice to Parents and Students

- Students taking College Credit Plus courses are subject to the rules and regulations of the university they are currently attending, including add/drop dates established by the participating institution.
- An academic advisor from the participating institution is required to meet with each student within the first two weeks of class. This may be done in a group setting.
- While in college courses, students are introduced to a learning environment that promotes an open exchange of ideas. Course content is presented on an adult level and class discussions require a mature understanding of divergent viewpoints and the ability to think critically on controversial issues.
- Student should understand that these courses are college-level courses, and the amount of work, pace, and rigor of content in college courses may be much greater than high school courses. In addition, college course grades become a part of a student's permanent college transcript and are calculated into the college grade point average. Poor performance in college courses may affect future university admissions and financial aid. Therefore, it is important to perform well in college courses to realize the benefits of taking college courses while in high school.
- If a student fails any college course the cost for tuition, fees, and books will be charged to the student's account at Edison High School. Edison Local School District will not pay for any courses (or textbooks) that a student has failed.
- These courses and the grades associated with them will be reported on both the student's high school transcript and the college transcript.
- College transcripts can be requested by visiting the respective college or university website associated with the courses taken. Edison Local School District does not have access to college transcripts.

